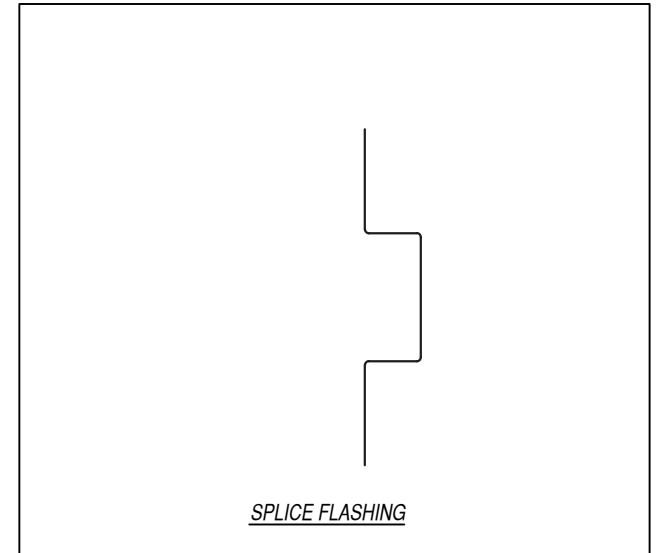
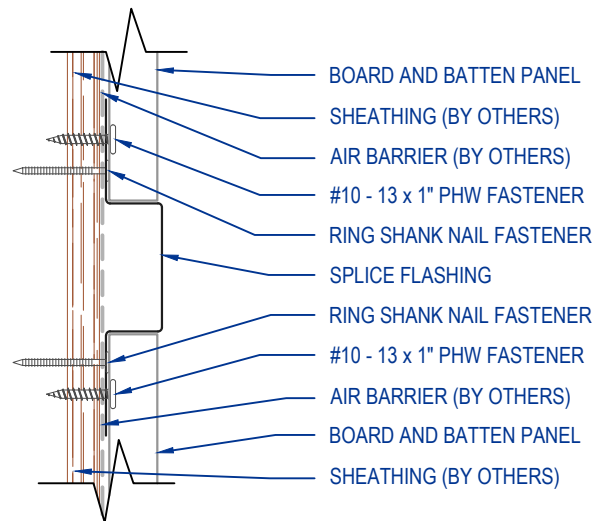


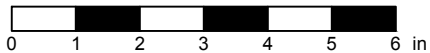


**KEYNOTES:**

- FASTENERS MUST PENETRATE WOOD SUBSTRATE BY 5/8" MINIMUM THREAD LENGTH
- FASTENER SPACING VARIES BASED ON PROJECT SPECIFIC LOADS AND/OR LOCAL BUILDING CODES
- THIS DETAIL DRAWING IS APPLICABLE TO ALL BOARD AND BATTEN WALL PANEL WIDTHS



SCALE: 4" = 1'-0"



EFFECTIVE DATE: 01-01-2023  
SUBJECT TO CHANGE WITHOUT NOTICE

DISCLAIMER: DETAIL SHOWN FOR ILLUSTRATION PURPOSES ONLY. ACTUAL PROJECT DETAIL MAY VARY

**DREXEL METALS - DREXMET.COM**

HQ: 1234 Gardiner Drive  
Louisville, KY 40213  
P: 888-321-9630  
F: 502-690-6174

399 East Industrial Park Drive  
Manchester, NH 03109  
P: 603-836-7122

1550 East 73rd Ave  
Denver, CO 80229  
P: 303-420-8538  
F: 303-420-8356

8641 Elm Fair BLVD  
Tampa, FL 33610  
P: 877-399-3600  
F: 727-572-7910

675 NW Enterprise Drive  
Port St Lucie, FL 34986  
P: 877-863-8256

6930 San Tomas Road Suite A  
Elkridge, MD 21075  
P: 800-863-8322  
F: 410-799-9913

1232 Vernon Street  
North Kansas City, MO 64116  
P: 816-356-4714

2101 Green Lane - Suite C  
Levittown, PA 19057  
P: 888-321-9630