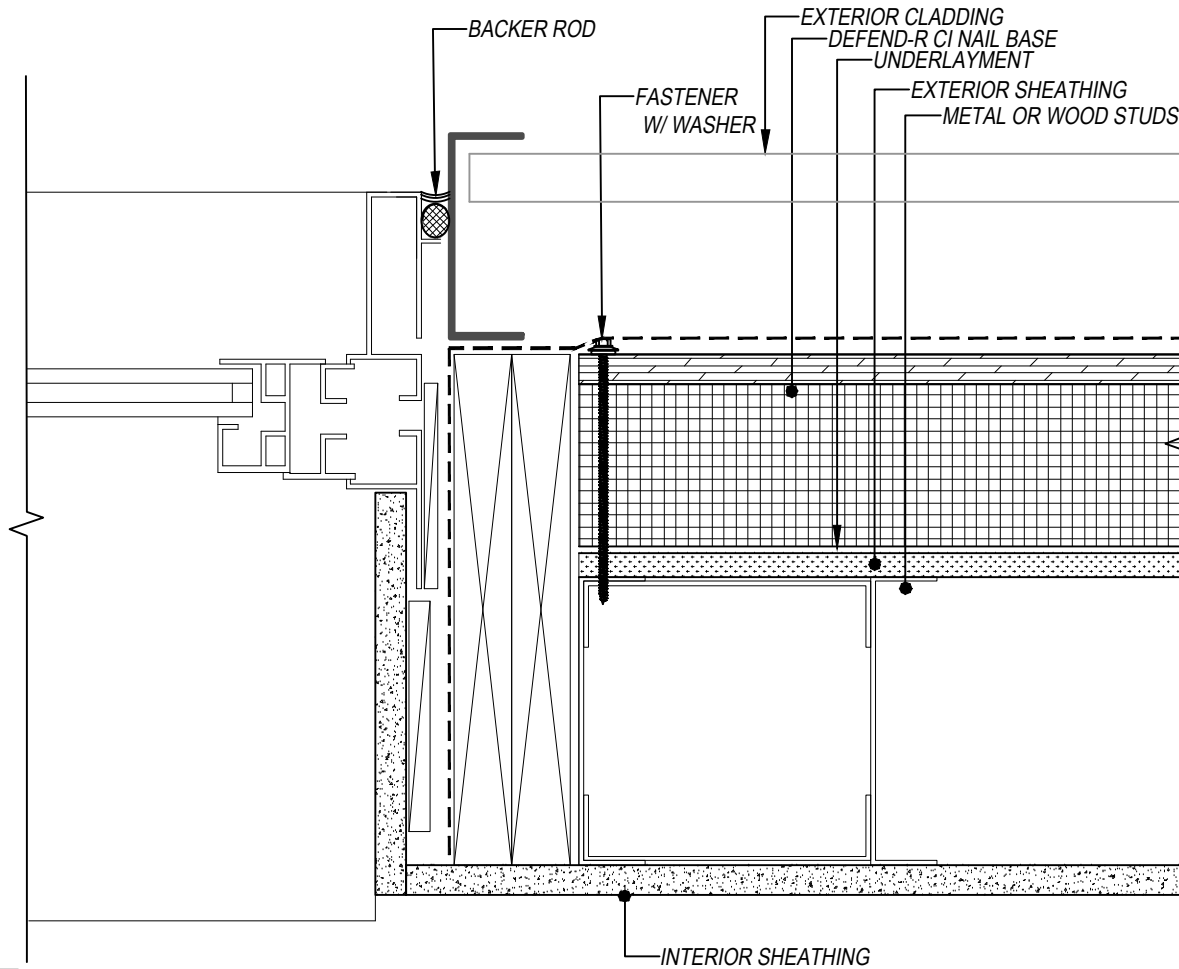
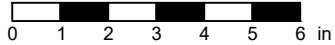


DEFEND-R CI NAIL BASE
PUNCHED INLINE WINDOW JAMB DETAIL
 DEFEND-R CI NAIL BASE
 CONTINUOUS INSULATION UNDER WRB WITH SHEATHING
 EXTERIOR CLADDING NON-MASONRY



SCALE: 3" = 1'-0"



SUBJECT TO CHANGE WITHOUT NOTICE

DISCLAIMER: DETAIL SHOWN FOR ILLUSTRATION PURPOSES ONLY. ACTUAL PROJECT DETAIL MAY VARY