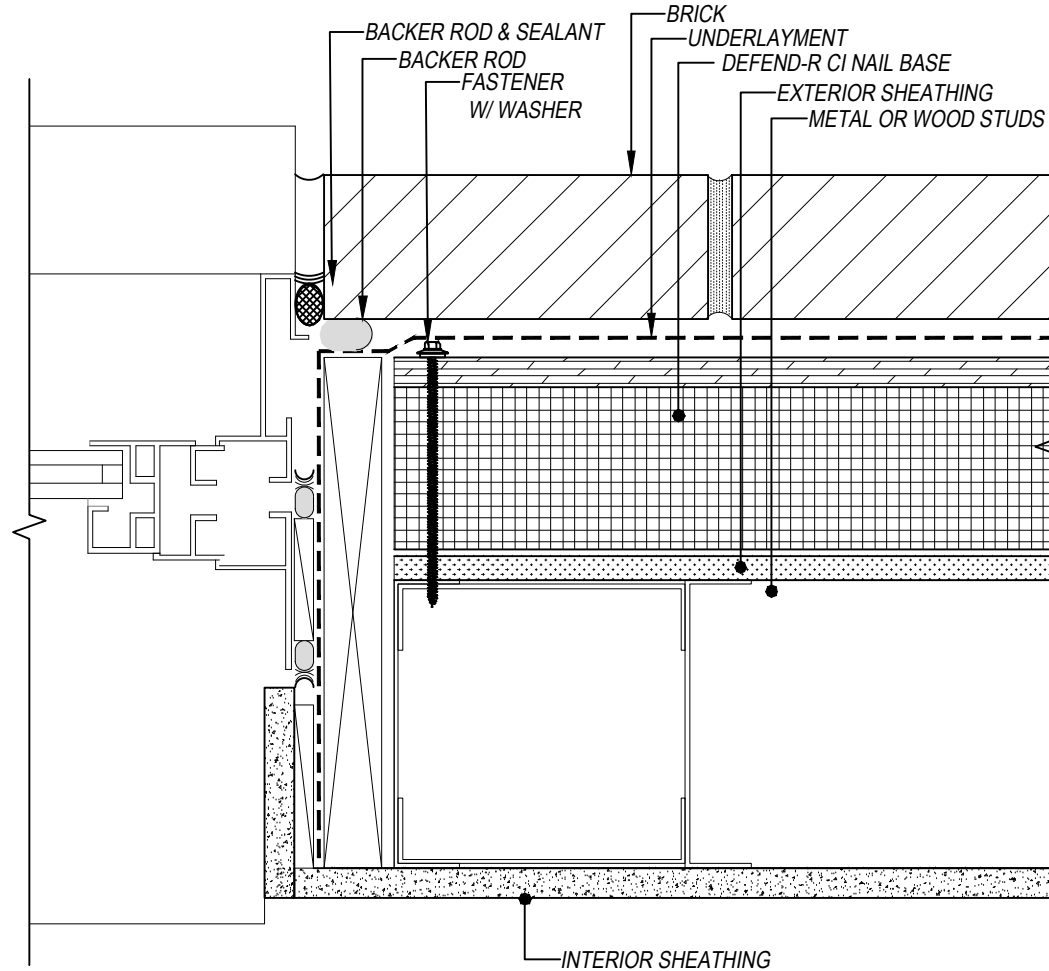
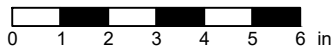


DEFEND-R CI NAIL BASE
PUNCHED INLINE WINDOW JAMB DETAIL
DEFEND-R CI NAIL BASE
CONTINUOUS INSULATION UNDER WRB WITH SHEATHING
MASONRY CLADDING



SCALE: 3" = 1'-0"



SUBJECT TO CHANGE WITHOUT NOTICE

DISCLAIMER: DETAIL SHOWN FOR ILLUSTRATION PURPOSES ONLY. ACTUAL PROJECT DETAIL MAY VARY