

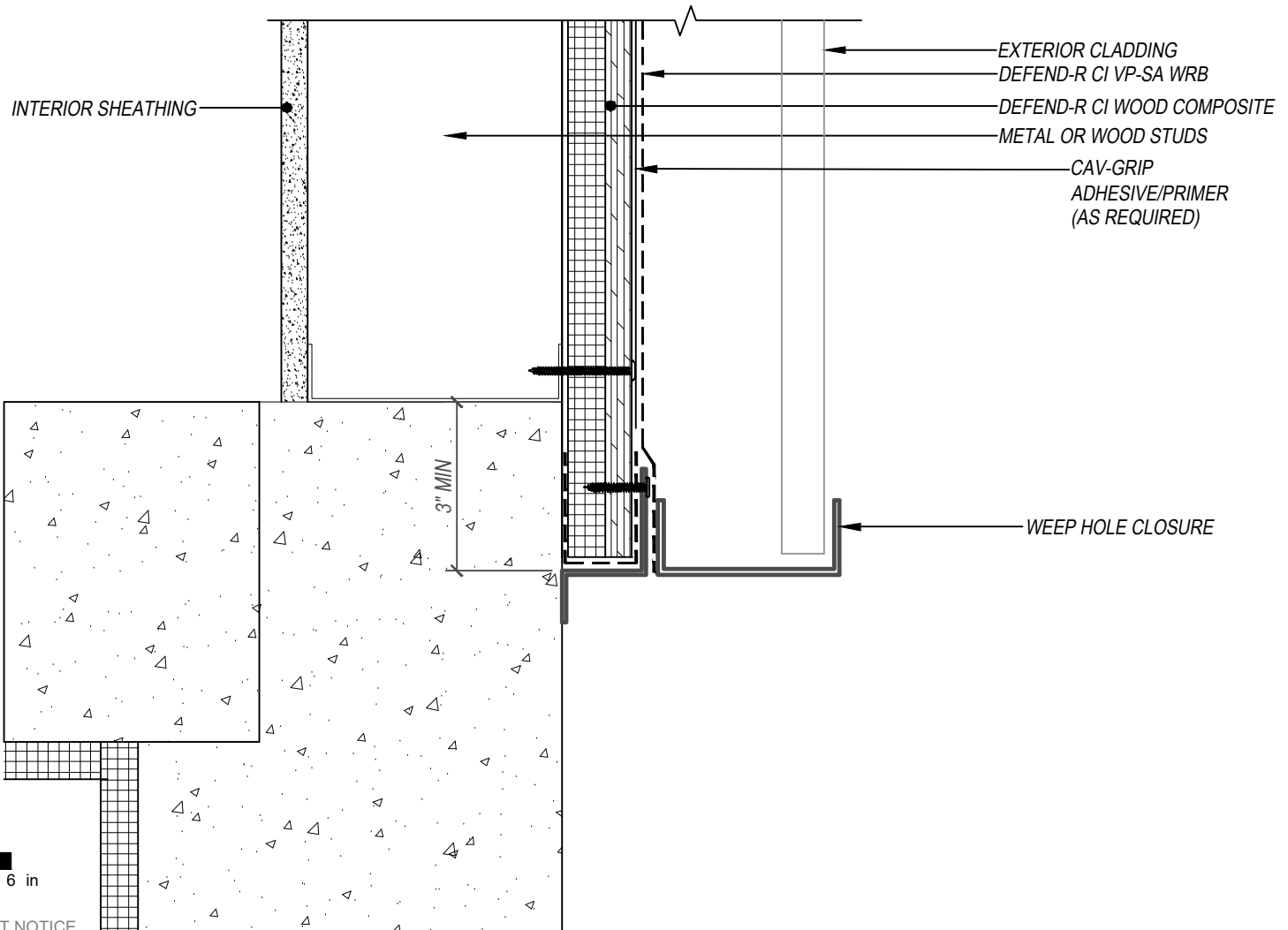
DEFEND-R CI POLYISO

TIE-IN AT FOUNDATION - OPTION 3

DEFEND-R CI WOOD COMPOSITE

CONTINUOUS INSULATION UNDER WRB NO SHEATHING

EXTERIOR CLADDING NON-MASONRY



DISCLAIMER: DETAIL SHOWN FOR ILLUSTRATION PURPOSES ONLY. ACTUAL PROJECT DETAIL MAY VARY