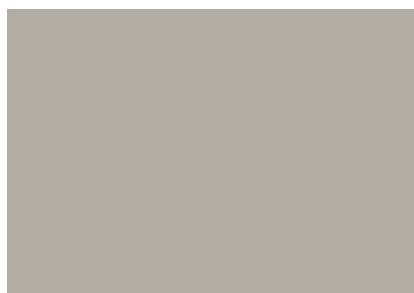
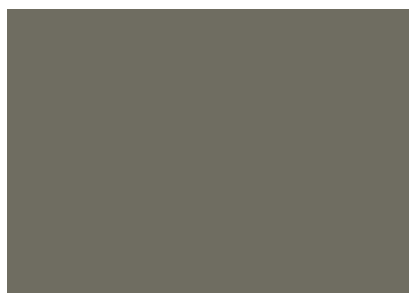


# LOW GLOSS METAL ROOFING, WALL, AND PERIMETER EDGE FINISHES



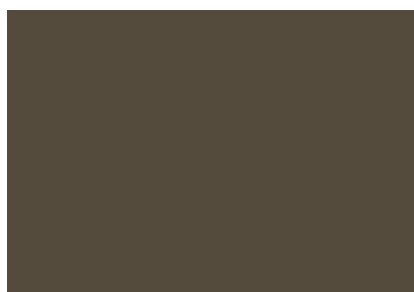
GRANITE



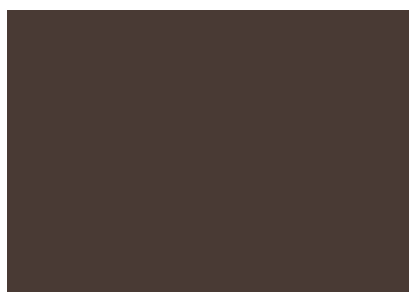
NANTUCKET GRAY



INKWELL



ASPEN BRONZE



CHESTNUT BROWN



CLASSIC BRONZE



PINE



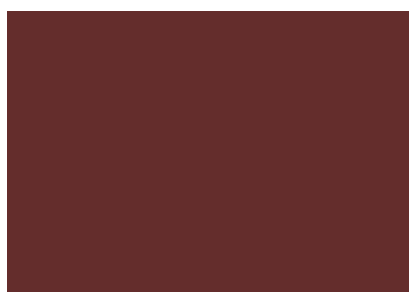
MIDNIGHT GREEN



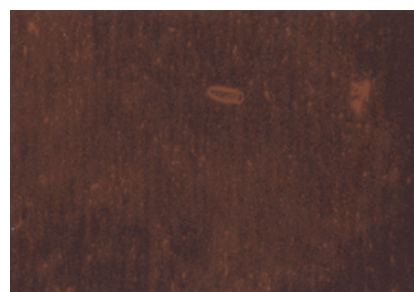
TRADITIONAL BLACK



BERKSHIRE BLUE



AUTUMN RED



WEATHERED STEEL

SPECIAL PRINT *premium*

\*Full low gloss selection is for Mid-Atlantic Region only. Contact your local sales rep for specific stocking information.

✓ = COOL ROOF RATED

**SHERWIN-WILLIAMS**  
Coil Coatings

# LOW GLOSS METAL ROOFING, WALL, AND PERIMETER EDGE FINISHES



Color: Inkwell  
Profile: 175S

• = Standard Product in Mid-Atlantic Region

✓ = CRRC Approved Finishes

Product Options	SR	SRI	24 ga x 20"	24 ga x 48"	22 ga x 48"	26 ga x 20"	26 ga x 48"	0.032 x 20"	0.032 x 48"	0.040 X 48"	0.050 x 48"	0.063 x 48"	Cool Roof Rated
<b>Low Gloss Colors</b>													
Aspen Bronze	0.26	26	•	•									✓
Autumn Red	0.32	34	•	•									✓
Berkshire Blue	0.30	31		•									
Chestnut Brown	0.29	29	•	•									✓
Classic Bronze	0.29	28	•	•		•	•						✓
Granite	0.32	33		•	•			•	•	•	•		✓
Inkwell	0.27	26	•	•		•	•						
Midnight Green	0.29	29	•	•									
Nantucket Gray	0.37	40	•	•									✓
Pine	0.10	6	•	•									
Traditional Black	0.20	17	•	•		•	•	•	•				
Weathered Steel	0.34	34		•									

- High-performance painted metal roofing and perimeter edge products.
- Drexel Metals standard sheets come in 48" x 120".
- 35-year paint warranty on Galvalume® and Aluminum substrates, excluding Exotics. Ask about our Gold Standard Warranty.

- Not all colors and gauges are stocked in all locations. Contact your local sales rep for specific stocking information and special requests including 22" coils, and custom gauges and widths.
- Custom colors available.
- Oil canning is not a cause for rejection.

**SHERWIN-WILLIAMS**  
Coil Coatings