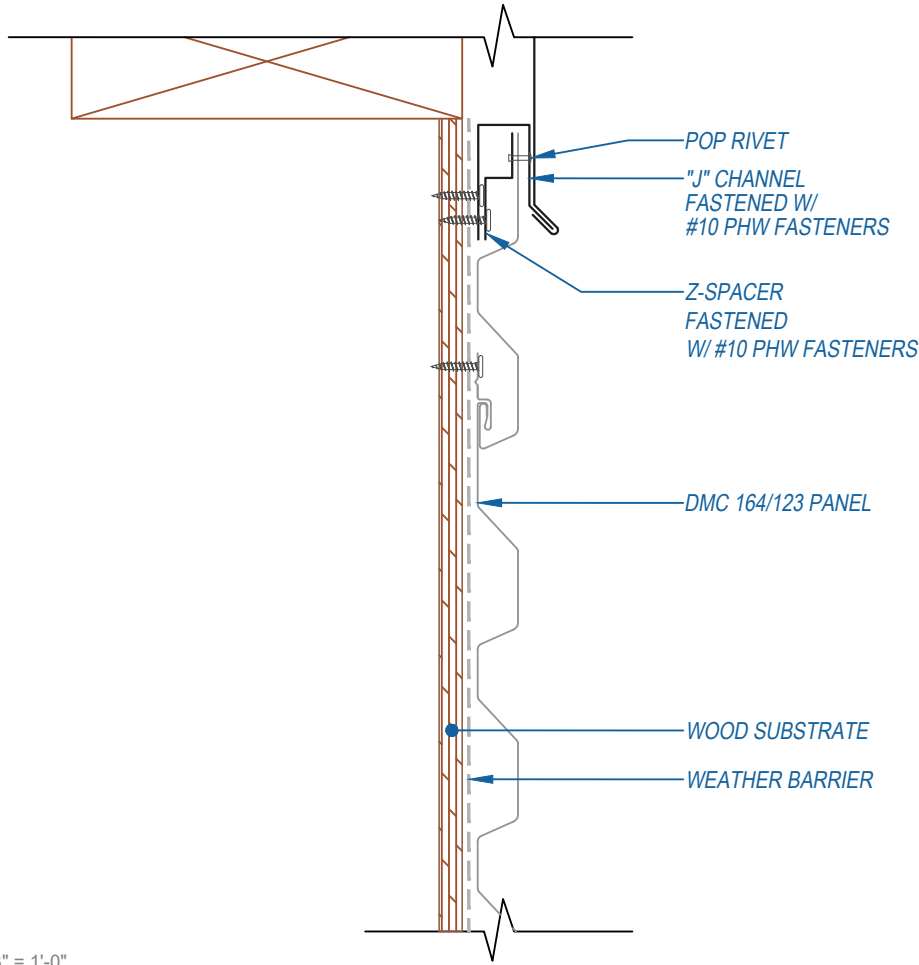




DMC 164 PANEL



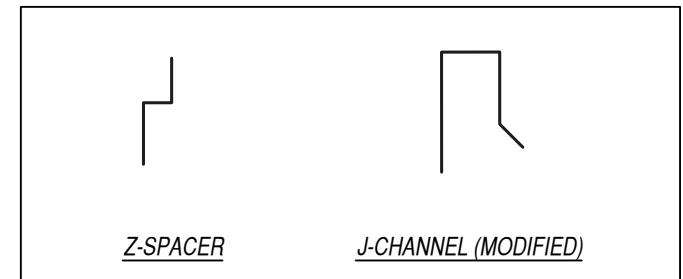
THIS DETAIL DRAWING IS APPLICABLE TO ALL DMC 164 & DMC 123 WALL PANEL PROFILES



CONCEALED CLIP END

KEYNOTES:

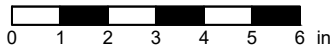
- TRIM FASTENERS ARE SELF-DRILL PANCAKE HEAD AND MUST BE INSTALLED IN A STAGGERED PATTERN
- FASTENERS MUST PENETRATE WOOD SUBSTRATE BY 5/8" MINIMUM THREAD LENGTH
- FASTENER SPACING VARIES BASED ON PROJECT SPECIFIC LOADS AND/OR LOCAL BUILDING CODES



FLASHINGS

DISCLAIMER: DETAIL SHOWN FOR ILLUSTRATION PURPOSES ONLY. ACTUAL PROJECT DETAIL MAY VARY

SCALE: 3" = 1'-0"



EFFECTIVE DATE: 03-27-2025
SUBJECT TO CHANGE WITHOUT NOTICE

DREXEL METALS - DREXMET.COM

HQ: 1234 Gardiner Drive
Louisville, KY 40213
P: 888-321-9630
F: 502-690-6174

399 East Industrial Park Drive
Manchester, NH 03109
P: 888-321-9630

1550 East 73rd Ave
Denver, CO 80229
P: 888-321-9630
F: 303-420-8356

8641 Elm Fair BLVD
Tampa, FL 33610
P: 888-321-9630
F: 727-572-7910

675 NW Enterprise Drive
Port St Lucie, FL 34986
P: 888-321-9630

1255 S Caton Avenue, Suite B
Baltimore, MD 21227
P: 888-321-9630
F: 410-799-9913

1232 Vernon Street
North Kansas City, MO 64116
P: 888-321-9630

2101 Green Lane, Suite C
Levittown, PA 19057
P: 888-321-9630