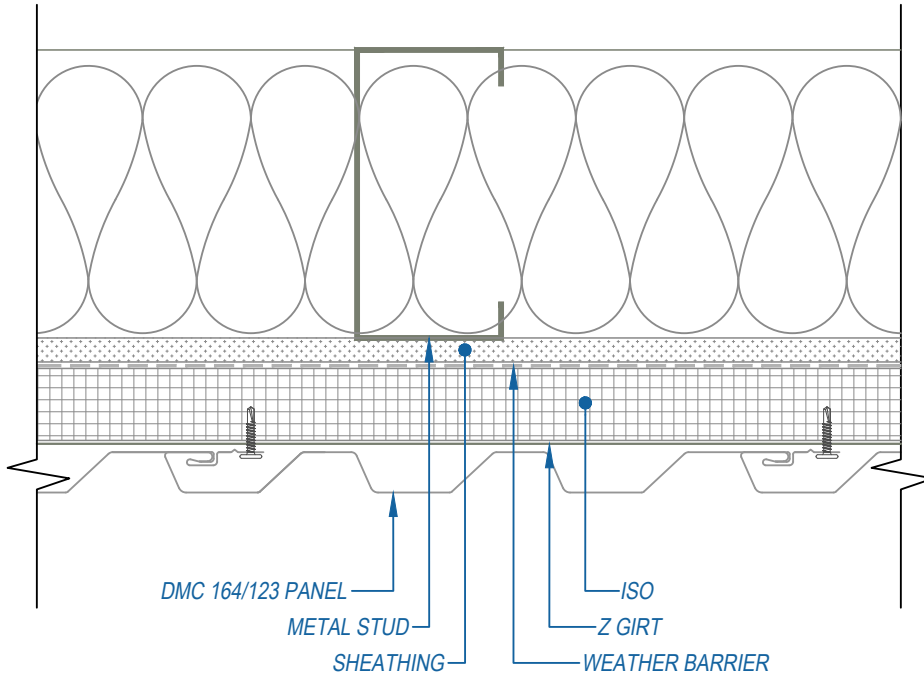


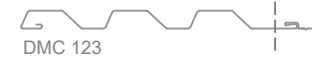


DMC 164 PANEL



*\* MAY OMIT SUPPORT PLATE IF ATTACHING TO STRUCTURAL MEMBER*

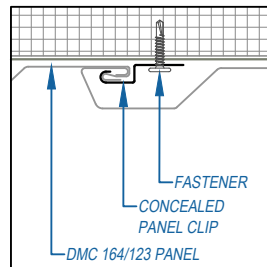
THIS DETAIL DRAWING IS APPLICABLE TO ALL DMC 164 & DMC 123 WALL PANEL PROFILES



CONCEALED CLIP END

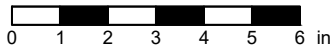
**KEYNOTES:**

- TRIM FASTENERS ARE SELF-DRILL PANCAKE HEAD AND MUST BE INSTALLED IN A STAGGERED PATTERN
- FASTENERS MUST PENETRATE STEEL SUBSTRATE BY 5/8" MINIMUM THREAD LENGTH
- FASTENER SPACING VARIES BASED ON PROJECT SPECIFIC LOADS AND/OR LOCAL BUILDING CODES



CONCEALED CLIP OPTION

SCALE: 3" = 1'-0"



EFFECTIVE DATE: 03-27-2025  
SUBJECT TO CHANGE WITHOUT NOTICE

DISCLAIMER: DETAIL SHOWN FOR ILLUSTRATION PURPOSES ONLY. ACTUAL PROJECT DETAIL MAY VARY

**DREXEL METALS - DREXMET.COM**

HQ: 1234 Gardiner Drive  
Louisville, KY 40213  
P: 888-321-9630  
F: 502-690-6174

399 East Industrial Park Drive  
Manchester, NH 03109  
P: 888-321-9630

1550 East 73rd Ave  
Denver, CO 80229  
P: 888-321-9630  
F: 303-420-8356

8641 Elm Fair BLVD  
Tampa, FL 33610  
P: 888-321-9630  
F: 727-572-7910

675 NW Enterprise Drive  
Port St Lucie, FL 34986  
P: 888-321-9630

1255 S Caton Avenue, Suite B  
Baltimore, MD 21227  
P: 888-321-9630  
F: 410-799-9913

1232 Vernon Street  
North Kansas City, MO 64116  
P: 888-321-9630

2101 Green Lane, Suite C  
Levittown, PA 19057  
P: 888-321-9630