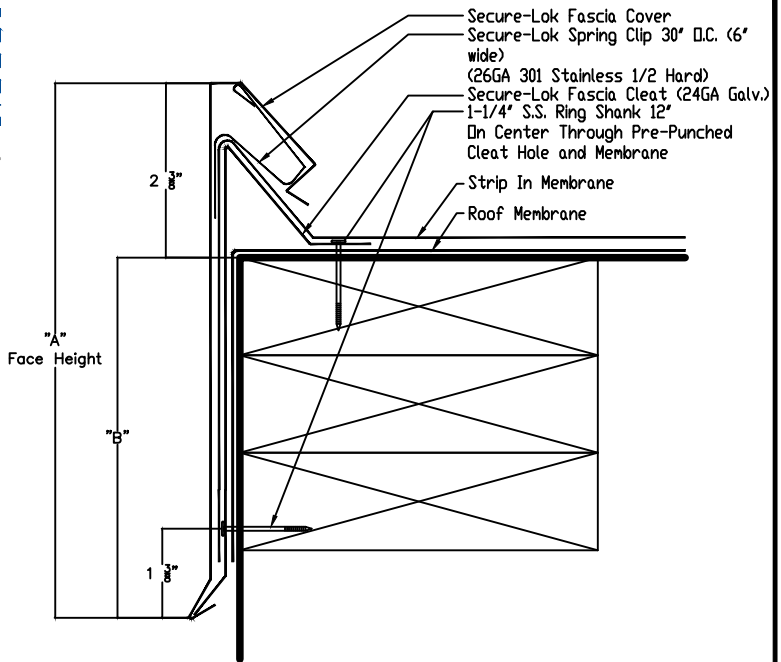
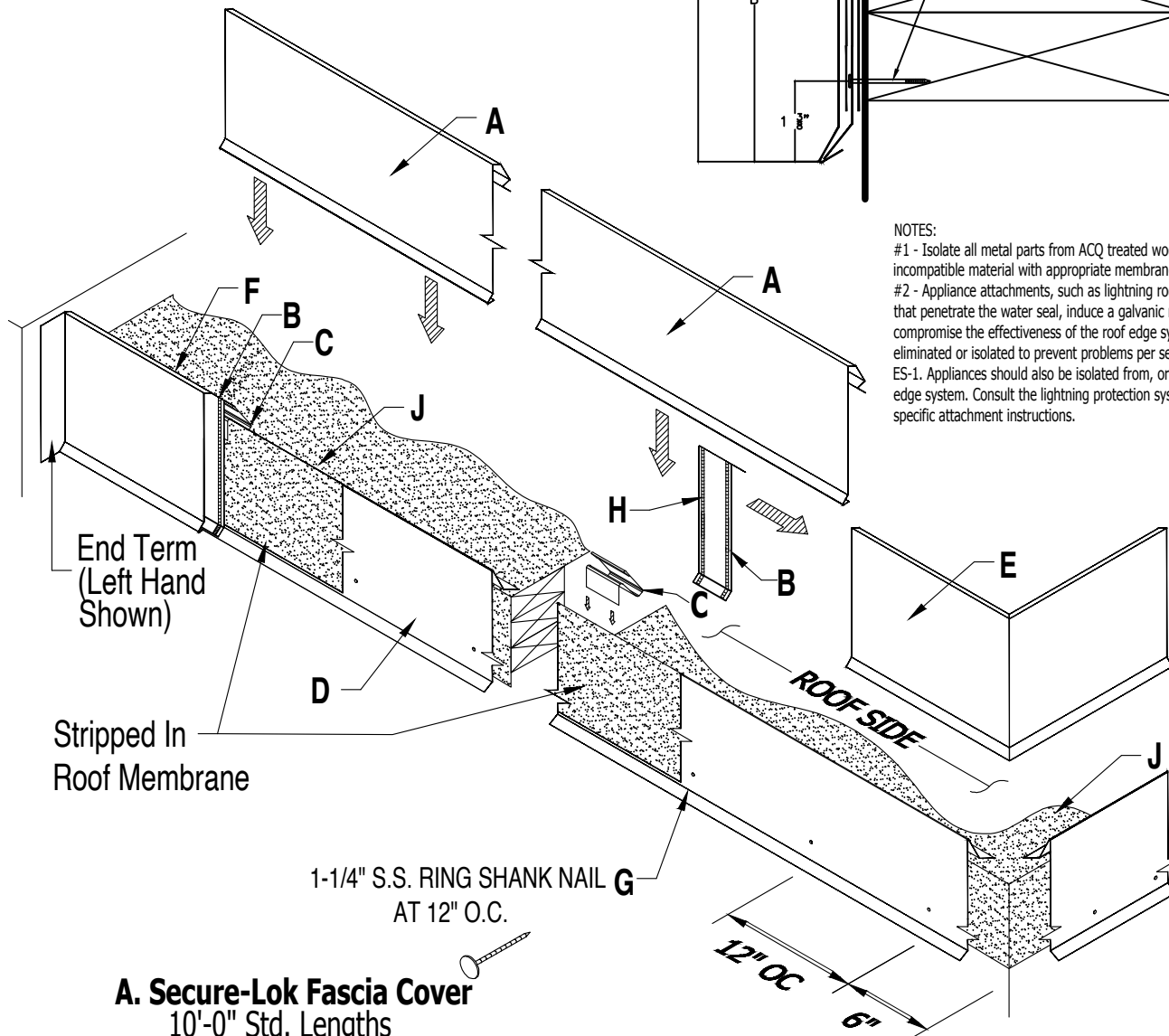


Installation Guide for Secure-Lok Fascia



NOTES:

- #1 - Isolate all metal parts from ACQ treated wood or other galvanically incompatible material with appropriate membrane material.
- #2 - Appliance attachments, such as lightning rods, signs, or antennae that penetrate the water seal, induce a galvanic reaction, or otherwise compromise the effectiveness of the roof edge system, shall be eliminated or isolated to prevent problems per section 8.0 if ANSI/SPRI ES-1. Appliances should also be isolated from, or not attached to, the roof edge system. Consult the lightning protection system manufacturer for specific attachment instructions.



A. Secure-Lok Fascia Cover

10'-0" Std. Lengths

B. Secure-Lok Fascia Splice Plate

6" Lengths

C. 22ga. S.S. Secure-Lok Spring Clip

6" Lengths (30" o.c.)

D. 24GA Steel Secure-Lok Continuous Cleat

10'-0" Lengths

E. Secure-Lok Fascia Miter

(Outside Corner Shown)

F. Secure-Lok Fascia End Term

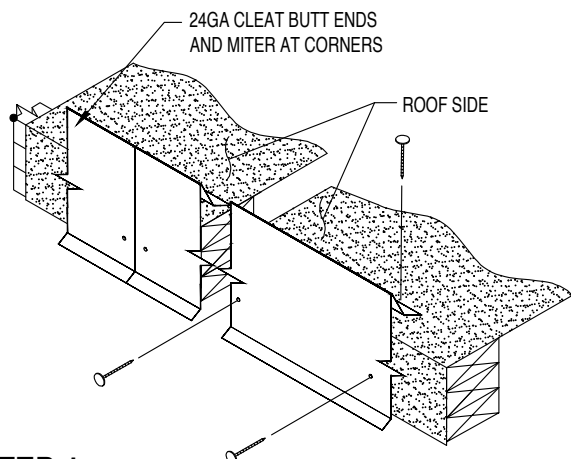
G. 1-1/4" S.S. Ring Shank Nail

at 12" o.c. (6" o.c. within 3'-0" of Corners)
(Included & Required)

H. Tube Sealant

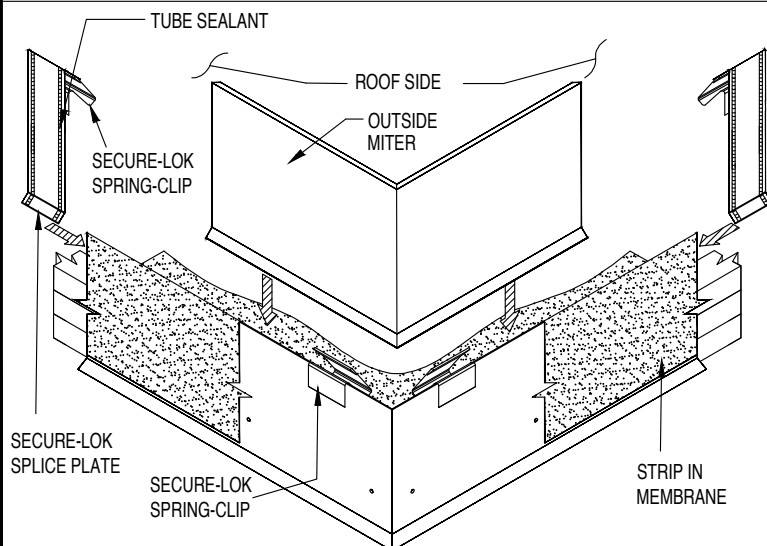
J. Approved Roofing Membrane

(By Installer)



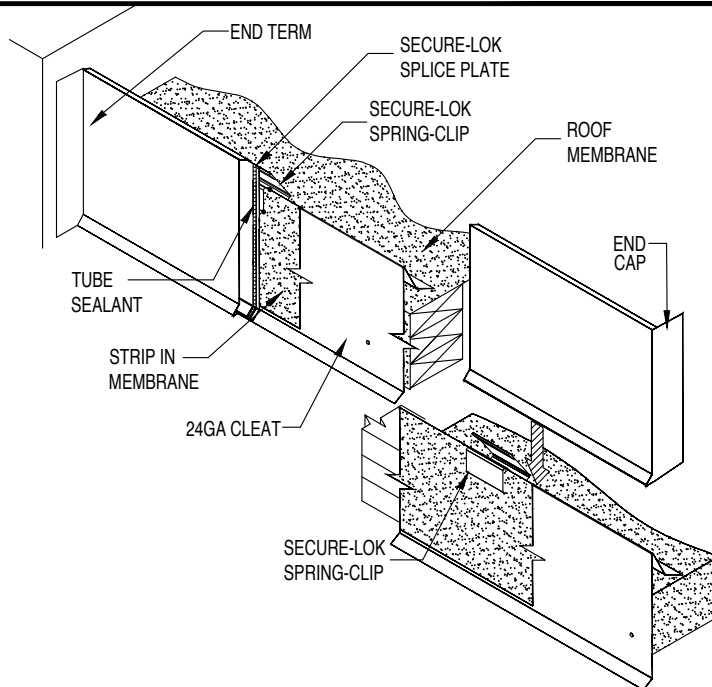
STEP 1 : Installing Secure-Lok 24GA Galvanized Cleat

Position approved membrane over the roofedge down the outside face of the wall, covering wood nailers completely allowing a 1/2" of excess membrane. Place the roof side foot of the Cleat squarely over the roof membrane on the top edge of the wood nailing plate. Press cleats securely in position and nail through the pre-punched holes with 1-1/4" S.S. Ring Shank Nails provided. Apply a bead of tube sealant over butted Cleat ends. For Miter application, miter cut into corner as required to maintain a continuous Cleat line. Then nail at a min. 6" in each direction from the corner or closer at special conditions. Install a strip of approved roofing membrane up and over the Cleat 1" below the fastening holes.



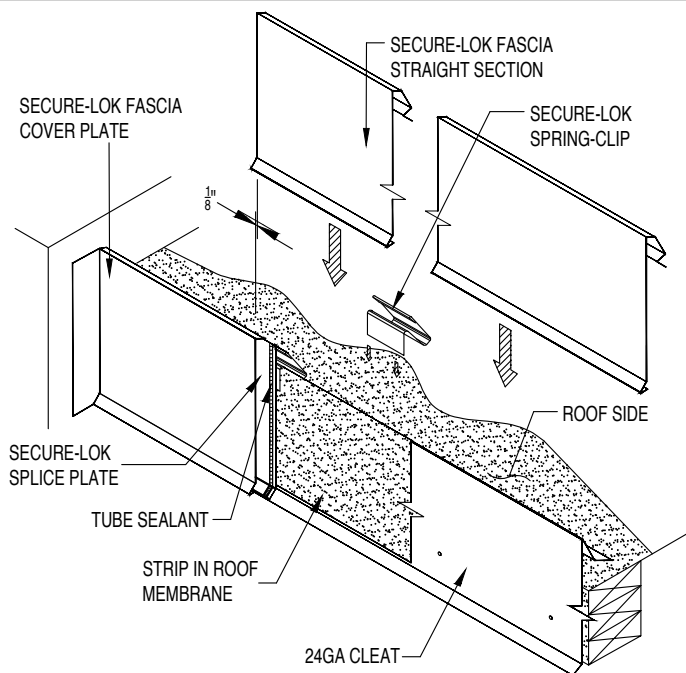
STEP 2 : Installing Secure-Lok Miters

Locate the Miters and Spring Clips for the appropriate corners. Apply a bead of Tube Sealant inside the Miter ends. Place a Splice Plate under each end of the Miter sections. Place a Secure-Lok Spring-Clip under the Splice Plate and along both sides of the miter. Install the Miter by pushing downward until it has engaged the Cleat along the entire Miter.



STEP 3 : Installing Secure-Lok End Caps and End Terms

Apply a bead of Tube Sealant inside End Cap or End Term and place a Splice Plate under each end of the End Cap or End Term. Place a Secure-Lok Spring-Clip along the cleat where the end term and end cap will be placed. Install the Secure-Lok End Caps and End Terms by pushing downward from the top until it has engaged with the Cleat.



STEP 4 : Installing Secure-Lok Fascia Straight Lengths

Apply a bead of Tube Sealant onto the Splice Plate of the Miter, End Term, or End Cap. Install Secure-Lok Spring-Clip along the cleat at 30" o.c. Install the Secure-Lok Fascia Flashing by pushing downward onto the top until it has engaged the Cleat. **Allow 1/8" Gap between Secure-Lok lengths for thermal expansion.** Consider lengths of all straight pieces prior to cutting to avoid creating relatively short sections adjacent to one another. Note: There should be a Splice Plate and a Secure-Lok Spring Clip at every joint.