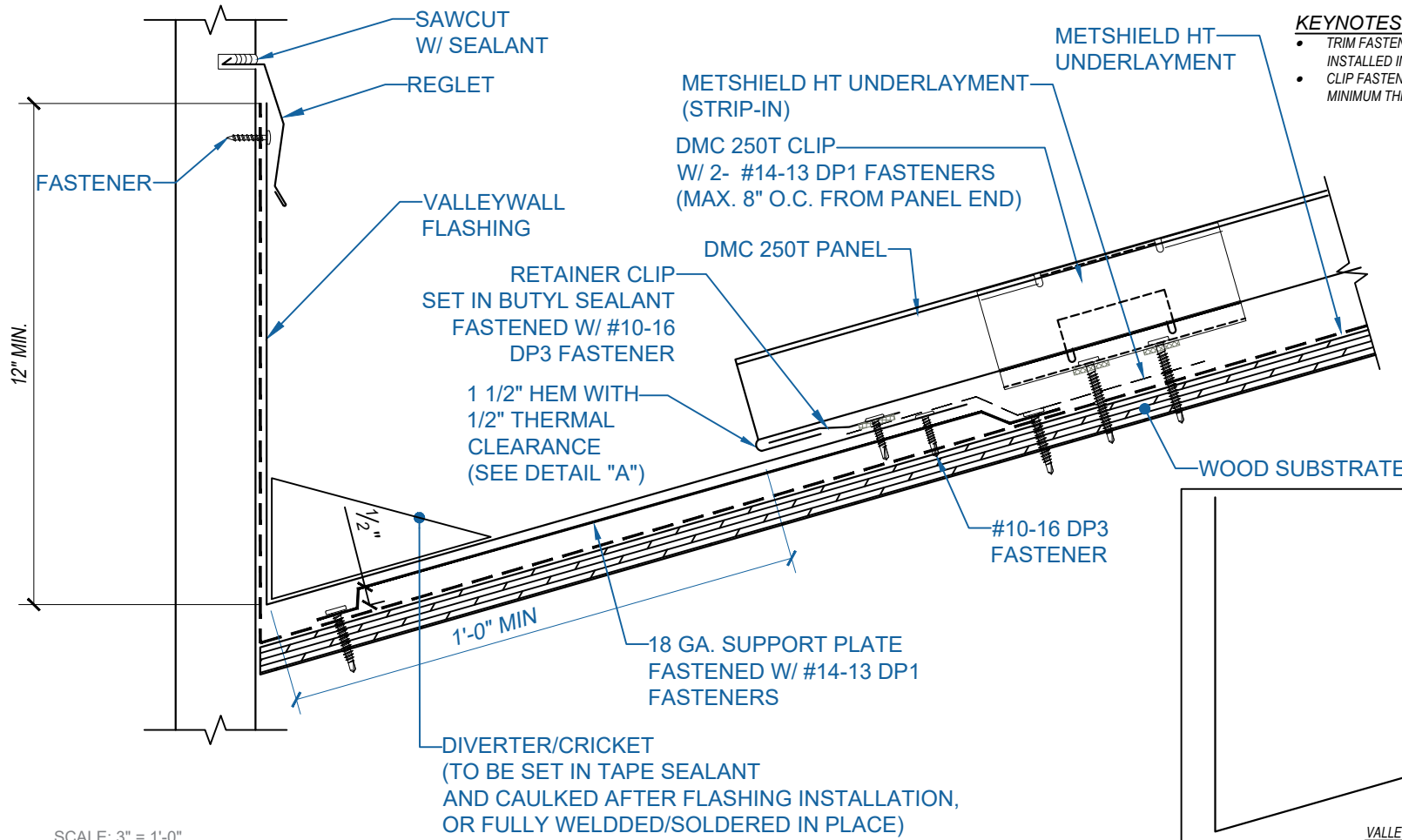
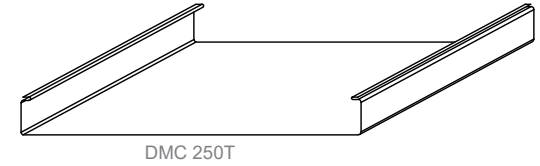
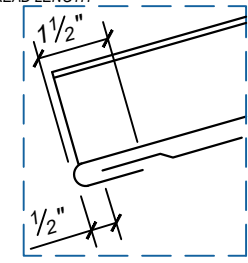


DMC 250T - WOOD SUBSTRATE DETAILS  
**VALLEYWALL**  
(WITH HEMMED FLASHING)

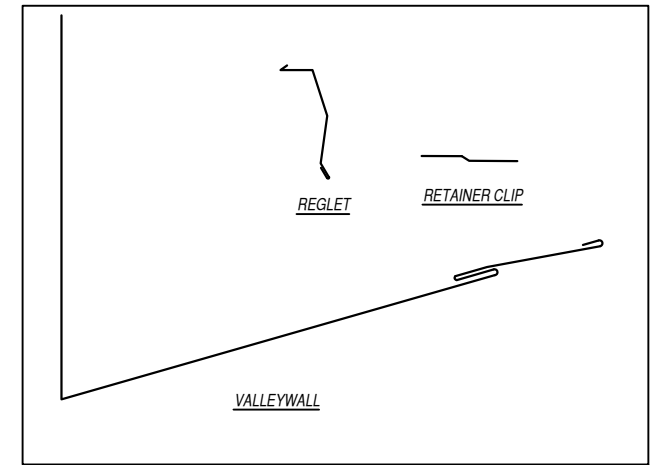


- KEYNOTES:**
- TRIM FASTENERS ARE SELF-DRILL PANCAKE HEAD AND MUST BE BE INSTALLED IN A STAGGERED PATTERN SPACED @ 12" O.C.
  - CLIP FASTENERS MUST PENETRATE WOOD SUBSTRATE BY 5/8" MINIMUM THREAD LENGTH



**DETAIL "A" ①**

① CONTACT CAM/DMC FOR JOB SPECIFIC HEM & THERMAL CLEARANCE



FLASHINGS

DISCLAIMER: DETAIL SHOWN FOR ILLUSTRATION PURPOSES ONLY. ACTUAL PROJECT DETAIL MAY VARY

SCALE: 3" = 1'-0"  
 0 1 2 3 4 5 6 in  
 EFFECTIVE DATE: 11-01-2025  
 SUBJECT TO CHANGE WITHOUT NOTICE